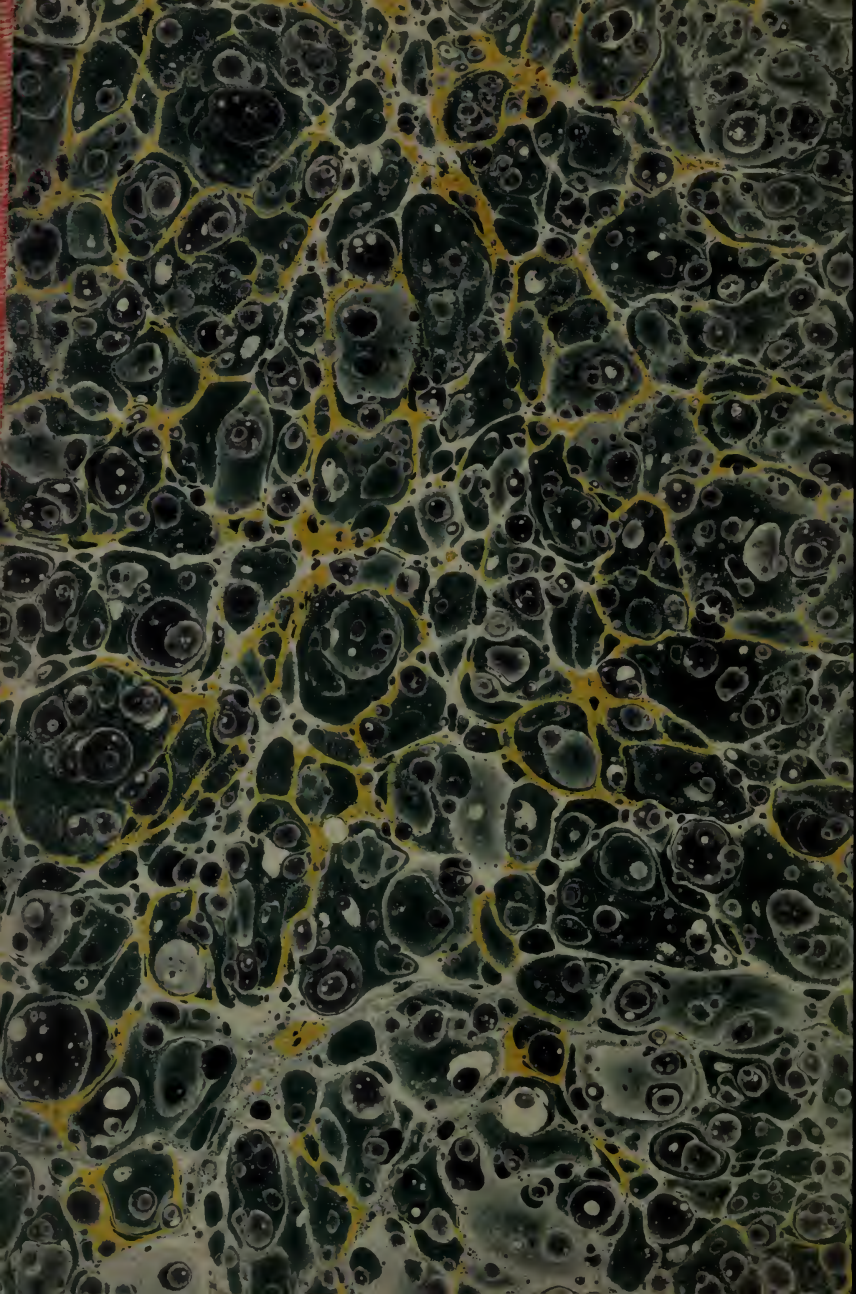




PIGOT & CO.'S
:
TRAVELLING MAP
OF
WILTSHIRE.



THE
ROY E. CHRISTENSEN
COLLECTION
OF VICTORIAN BOOKS



AT
BRIGHAM YOUNG UNIVERSITY
LIBRARY

Assembled by David Mæree

BRIGHAM YOUNG UNIVERSITY



3 1197 22902 6445

912.4231
P629-P
1940

5000





SALISBURY CATHEDRAL.

- REFERENCES to the "HUNDREDS."**
THE LARGER TOWNS ON THE MAP.
- | | | |
|----------------------------|---------------------|-----------------------------|
| 1. Malmesbury | 10. Swainborough | 20. Albury |
| 2. Bath, with Grotto | 11. Polton, Cranage | 21. Tisbury |
| 3. King'sbury | 12. Kilsickan | 22. Beach & Dale |
| 4. 3 rd Downham | 13. Bradford | 23. 3 rd Downham |
| 5. Quip, Denham | 14. Waterheadon | 24. Mire |
| 6. Calne | 15. Westbury | 25. Dunworth |
| 7. Skelby | 16. Warminster | 26. Dulle |
| 8. Ramsbury | 17. Devizes | 27. Gauden, Kildwath |
| 9. Farnborough | 18. Ebstur, Kewley | 28. Downton |
| | 19. Marlborough | 29. Bratfield |



Half Roads
 Measured from the distance from one Market
 Town to another across the Road as
 (Red Roads)
 (Gold Roads)
 (Silver Roads)
 (Bronze Roads)
 (Iron Roads)
 (Lead Roads)
 (Tin Roads)
 (Copper Roads)
 (Zinc Roads)
 (Nickel Roads)
 (Cadmium Roads)
 (Mercury Roads)
 (Antimony Roads)
 (Arsenic Roads)
 (Sulphur Roads)
 (Phosphorus Roads)
 (Nitrogen Roads)
 (Oxygen Roads)
 (Hydrogen Roads)
 (Carbon Roads)
 (Nitrogen Roads)
 (Oxygen Roads)
 (Hydrogen Roads)
 (Carbon Roads)

UPB

