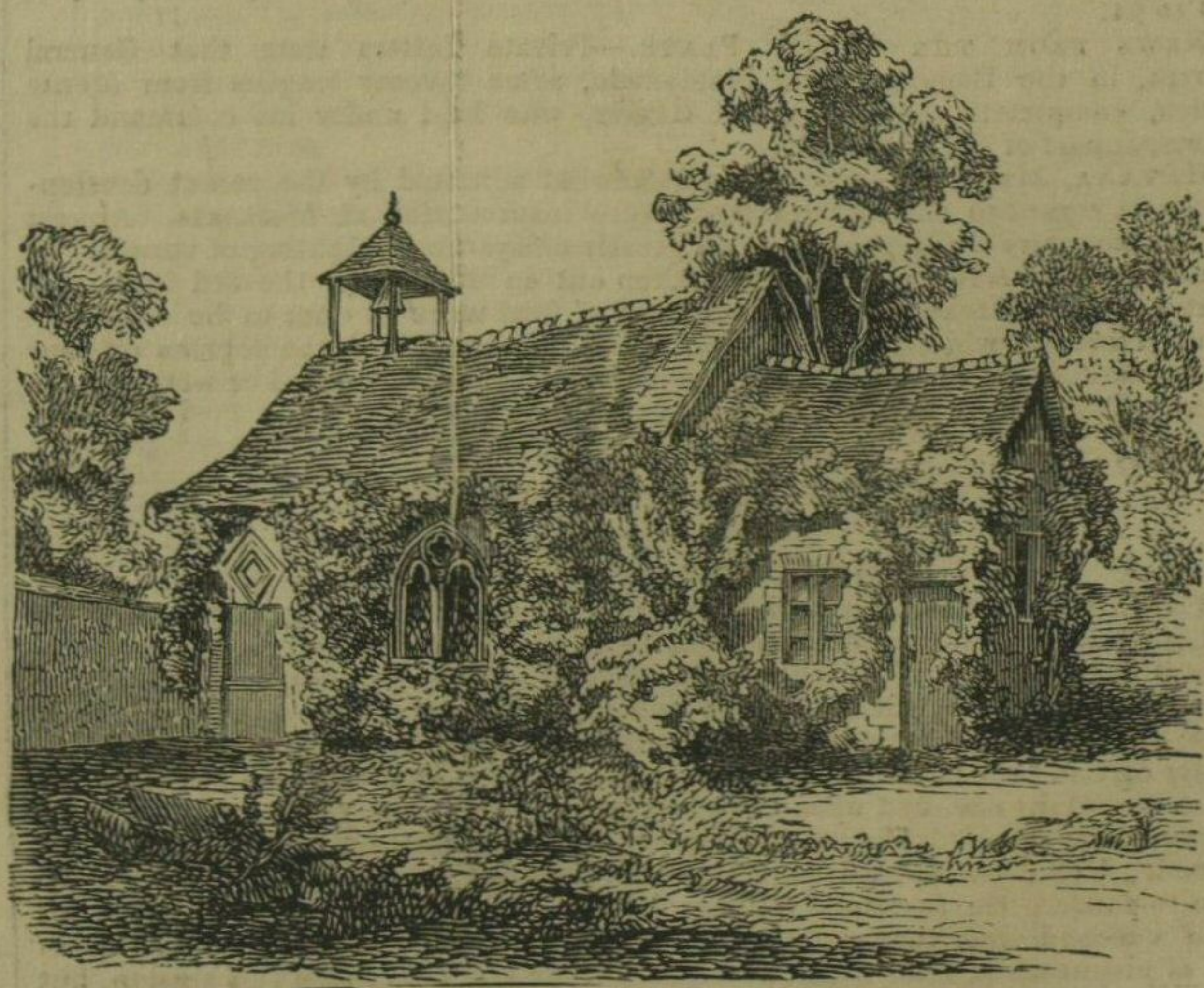


BIRTHPLACE OF ADDISON.

Milston, the birth-place of Addison, is a retired village, containing only 107 inhabitants, and is distant a few miles from the town of Amesbury, in Wiltshire. The Essayist's father, who was Dean of Lichfield, was also Rector of the parish, and here, in the Rectory-house, on the 1st of May, 1672, the celebrated author of "The Spectator" was born.

Our sketch represents the house in its present state of repair; but, even in the days of Addison, it must have been a very humble abode.



MILSTON CHURCH.

No tradition remains in the village respecting his early habits. An original engraved portrait is still preserved in the rectory. The church, which is close to the house, is a very ancient structure, almost entirely covered with ivy.