

National Trust Properties

Little Clarendon

GIFTS TO THE NATION

TRUST PROPERTIES IN WILTS

FUNDS FOR ENDOWMENT

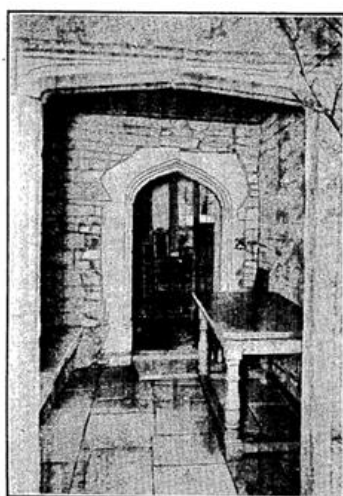
Numerous valuable additions to the properties presented to the National Trust for Places of Historic Interest and Natural Beauty were announced by Lord Zetland, chairman of the executive committee, at the annual meeting at the Royal Society of Arts yesterday.

Lord Zetland said that Mrs Engleheart and her daughter had generously arranged to vest in the National Trust their beautiful and historic property, Little Clarendon, at Dinton, in Wiltshire, with an endowment fund. They would remain as tenants of the Trust.

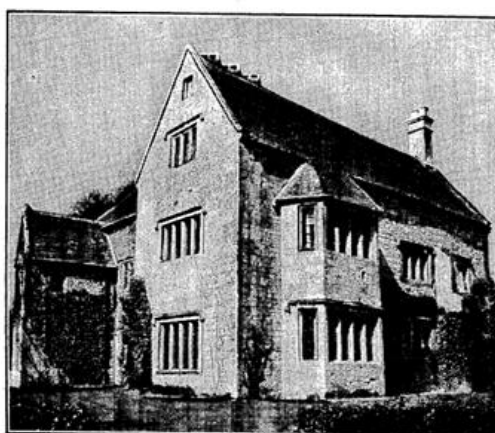
The property, which extends to some 27 acres, was bought in 1901 by Mrs Engleheart's husband, the Rev George Herbert Engleheart, for the growing of the many new varieties of daffodils associated with his name. Little Clarendon itself, said to date from the end of the fifteenth century, is a delightful Tudor house. It is built of Chilmark stone, and Lord Chancellor Clarendon is said to have lived in it. Beside it stands Lawes Cottage, also included in the gift, an attractive stone and thatched house which was the home of William Lawes, the composer and friend of Milton. The property also includes three old cottages close to Dinton Church.

With the property the Trust will preserve most of the furnishings of the house, including miniatures of members of the family by Mr Engleheart's famous grandfather. The Roman Catholic Chapel by the house will be preserved and continued in use, and it is a condition of the gift that Little Clarendon should be let only to Roman Catholics.

(The Times Tuesday July 30th, 1940 page 2)



THE KING saw for himself yesterday some of the damage done during the weekend by the German raiders in the bombed area of London. Our pictures show him talking to women whose houses had been hit, and (right) inspecting damage.



LITTLE CLARENDON.—Two pictures showing the entrance porch and the exterior from the south-east of Little Clarendon, Dinton, Wiltshire, which has been vested in the National Trust by Mrs. Engleheart and her daughter, with an endowment fund. This beautiful Tudor house, dating from the end of the fifteenth century, is built of Chilmark stone, and is stated to have been the home at one time of Lord Chancellor Clarendon.