



In The News

THE ESTATE MARKET – COMPTON PARK

Quoted Prices

A house, rich in carving and panelling of the school of Wren and Grinling Gibbons, and who owned by the descendant of men who held it, and fought and suffered as Royalists, Compton Park, near Salisbury, is for sale by Messrs. George Trollope and Sons and Messrs. Rawlence and Squarey. The park and farms of 1,300 acres, now offered with almost all the village of Compton Chamberlayne, are sheltered by Compton Down, noted for an ancient earthwork, called Chislebury Camp, commanding the road from Salisbury to Shaftesbury.

The vendor is Captain George Penruddocke, some of whose ancestors moved from Cumberland to Wiltshire, one, Sir George Penruddocke, becoming Sheriff and Member of Parliament in 1562. His son bought Compton Chamberlayne and rebuilt the house. In 1655, John Penruddocke, whose two younger brothers had lost their lives in battle, raised the standard of Charles II at Salisbury. The landowners and tenants supporting him were driven to Devonshire, and John Penruddocke was tried and beheaded at Exeter. The family remained in possession of Compton Park and must have spent a large sum, even for those days, in the adornment of the house.

The wainscoting of the dining room and the other rooms is remarkable for the size of the panelling. Elaborate carving on doorways and overmantels exhibits "drop" ornamentation, which is thought to have been wrought in London, but much of the work was doubtless done by local craftsmen. Adam influence is seen in the drawing-room, the decoration of which dates from 1780. The house, of two floors with an embattled parapet, stands in gardens of the old English type, close to the fourteenth century church. It is a good shooting estate, with wild duck on the ornamental waters. Trout up to 4 ½ lb. are taken in the three miles of fishing in the Nadder.

(*The Times* (London, England) Saturday, May 24, 1930)

THE ESTATE MARKET – COMPTON PARK

Compton Park, near Salisbury, 1,330 acres, embracing almost all the village of Compton Chamberlayne, woodlands which are full of game, and three miles of trout fishing in the Nadder, will be sold at the Mart on July 23, by Messrs. George Trollope and Sons. The vendors are the executors of the late Mr Charles Penruddocke, one of whose ancestors was beheaded for heading a Royalist rising. The house, illustrated yesterday (p. 26), contains magnificent old carving and panelling and an Adam drawing-room. The income from farms and other holdings is £1,400 a year.

(*The Times* (London, England) Tuesday, July 01, 1930)

Advertisement

GEORGE TROLLOPE & SONS.

(ESTABLISHED 1778.)

BY DIRECTION OF THE EXORS. OF THE LATE CHARLES PENRUDDOCKE, ESQ.

“COMPTON PARK,” NEAR SALISBURY.

BETWEEN SALISBURY (EIGHT MILES) AND SHAFTESBURY (TWELVE MILES).

FREEHOLD RESIDENTIAL, AGRICULTURAL
AND SPORTING ESTATE OF 1,330 ACRES.

HISTORICAL OLD MANSION IN A FINELY TIMBERED PARK WITH LAKES.

Lounge hall, noble dining room with carved panelling, beautiful Adam drawing room, eighteen bed rooms, &c.
OLD-WORLD GARDENS. THREE LODGES. COTTAGES. THREE EXCELLENT FARMS.

THE PENRUDDOCKE ARMS AND PRACTICALLY THE WHOLE OF

THE VILLAGE OF **COMPTON CHAMBERLAYNE.**

WELL-PLACED WOODS, AFFORDING CAPITAL SHOOTING.

THREE MILES OF FIRST-RATE TROUT FISHING IN RIVER NADDER.

POSSESSION OF THE MANSION, WOODS, AND LANDS IN HAND WILL BE

GIVEN ON COMPLETION OF THE PURCHASE.

THE RENT ROLL FROM THE FARMS, &c., AMOUNTS TO ABOUT £1,400 PER ANNUM.

To be SOLD by AUCTION as a whole, at the Mart, 155, Queen Victoria-street, London, E.C.4, on
WEDNESDAY, JULY 23rd, 1930 (unless previously Sold Privately).

Illustrated particulars, with plan and conditions of sale, may be obtained from Messrs. Church, Adams,
Tatham and Co., Solicitors, 11, Bedford-row, London, W.C.1; and, with orders to view, of Messrs. Rawlence
and Squarey, Salisbury, or GEORGE TROLLOPE and SONS, 25, Mount-street, London, W.1.

(*The Times* (London, England) Monday, July 14, 1930)

THE ESTATE MARKET – COMPTON PARK

Compton Park, the Wiltshire seat of the family of Penruddocke, has been sold to Mr George Cross, of Smarts Hill House, Penshurst, who intends to reside in the mansion after its renovation and improvement. There will be nothing in the nature of “restoration” as sometimes implies, for the carving and panelling of the school of Wren and Grinling Gibbons and the Adam drawing-room are still in their original perfection. The house is of stone and of two floors only, with an embattled parapet and the gardens are of the old English formal type, adjoin a walled kitchen garden.

The vendors, executors of the late Mr Charles Penruddocke, were represented by Messrs. George Trollope and Sons and Messrs. Rawlence and Squarey. The sale effected by the two firms includes the whole estate of 1,300 acres, with almost all the village of Compton Chamberlayne, near ancient earthworks called Chislebury Camp, commanding the Salisbury to Shaftesbury road.

Compton Park has been in the possession of the Penruddockes about four centuries, one of the family having moved from Cumberland and speedily made a name for himself in the South-western counties. The present mansion was built by a son of Sir George Penruddocke who was a member for Wiltshire in 1562. In 1655 John Penruddocke gave up the study of the law in Gray’s Inn, and having lost his two brothers in battle, raised the standard of Charles II at Salisbury. He and his adherents were routed, and he was beheaded at Exeter. The family, however, retained the estate and spent a large sum in maintaining and improving the mansion. Compton Park is an unspoilt example of a great period of English domestic architecture and there will be general gratification in Wiltshire that it is to be carefully kept up as a county seat.

As a sporting property Compton Park is first-rate, there being, beside plenty of game, wild duck shooting on the ornamental waters in the park. Three miles of trouting in the Nadder are noted for large fish, trout up to 4 ½ lb. being very often caught. The sale has taken place within a few weeks of the auction, in preparation for which Messrs. George Trollope and Sons issued illustrated particulars and a short historical and architectural account of the seat. On the cover was the coat of arms of the Penruddockes with their motto “Gloria soli Deo”

(*The Times* (London, England) Monday, August 14, 1930)

©Wiltshire OPC Project/Cathy Sedgwick/2012

PROPERTY

All the charm of OLD CHELSEA. Balconies overlooking garden and waterfront where the Greaves brothers built boats and painted pictures and Whistler and Turner created masterpieces. Centre of the mansion built by the Earl of Lindsay in Charles II's day, but now modernised and up to date in every respect; 4 master bed rooms, 2 bath and 3 reception rooms; in addition; staff sitting room, 2 bed rooms and bath, ground-floor kitchen and offices; vine and fig tree flourish in small formal garden at rear and a mulberry planted by James II is seen in the "Lutyens" garden adjoin. The low sum of £12,500 will be accepted for the FREEHOLD – Particulars and appointments to view of the Owner, G. Cross, Compton Park, Compton Chamberlayne, Salisbury, Wilts, or principal London Agents.

(*The Times* (London, England) Thursday, June 30, 1949)

COUNTRY PROPERTY

SOUTH WILTS. Nadder Valley 8 miles West of Salisbury. – HISTORIC COUNTRY SEAT, Compton Park, Compton Chamberlayne. Fine Charles II Manor House in lovely setting; lake, timbered park lands; 2 good cottages; valuable farm buildings; garage and stabling; about 27 ½ acres; further 16 acres if required and option to lease valuable trout fishing with water bailiff's cottage. Vacant possession of whole except one cottage. For SALE BY AUCTION in Salisbury on July 8th – Illustrated particulars from the Auctioneers, Messrs WOOLLEY & WALLIS, Castle Street, Salisbury (Tel. 2491).

(*The Times* (London, England) Wednesday, May 7, 1952)

Advertisement

SALES BY AUCTION (continued)
SOUTH WILTS.
IN THE NADDER VALLEY,
8 miles West of Salisbury.
THE HISTORIC COUNTRY SEAT
COMPTON PARK
COMPTON CHAMBERLAYNE
Home of a famous attested Jersey Herd.
A fine example of a Charles II Manor House in a very lovely setting; lake and timbered park lands; 2 good cottages; valuable farm buildings; garages, stabling; original stone tithe barn,
IN ALL ABOUT 27½ ACRES,
with a further 16 acres if required and an option to lease the valuable trout fishing with water bailiff's cottage. With vacant possession for the most part. **SALE by AUCTION** (unless sold previously) by **WOOLLEY & WALLIS**, at the Red Lion Hotel, Salisbury, on **TUESDAY, 8th JULY, 1952,** at 3.30 p.m.
Illustrated particulars with plan from the Solicitors, Messrs. Kenneth Brown & Co., Essex Street, Strand, W.C.2, or the Auctioneers.
CASTLE AUCTION MART, SALISBURY (Tel. 2491).

(*The Times* (London, England) Thursday, June 14, 1952)

Advertisement

SOUTH WILTS.
IN THE NADDER VALLEY,
8 miles West of Salisbury.
THE HISTORIC COUNTRY SEAT
COMPTON PARK,
COMPTON CHAMBERLAYNE.
Home of a famous attested Jersey Herd.

A fine example of a Charles II Manor House in a very lovely setting; lake and timbered park lands; 2 good cottages; valuable farm buildings; garages, stabling; original stone tithe barn.

IN ALL ABOUT 27½ ACRES,
with a further 16 acres if required and an option to lease the valuable trout fishing with water bailiff's cottage. With vacant possession for the most part. **SALE by AUCTION** (unless sold previously) by **WOOLLEY & WALLIS**, at the Red Lion Hotel, Salisbury, on **TUESDAY, 8th JULY, 1952,** at 3.30 p.m.

Illustrated particulars with plan from the Solicitors, Messrs. Kenneth Brown & Co., Essex Street, Strand, W.C.2, or the Auctioneers.

CASTLE AUCTION MART, SALISBURY (Tel. 2491).

(The Times (London, England) Thursday, June 28, 1952)

THE PROPERTY MARKET

OLD FAMILY RESIDENCE CHANGES HANDS PRIVATELY


Compton Park at Compton Chamberlayne, near Salisbury, has just changed hands privately. Sold by Mrs L.F. Schuster, it has been bought by Mr D.C. Berry.

Much rebuilt in the seventeenth century the house is mostly of about the time of Charles II, but earlier features remain, including an Elizabethan newel staircase. There is good decorative work inside, including some attributed to Wren and Grinling Gibbons. The vendor bought the property some eight years ago. Before then it had been in the possession of the Penruddock family for some 300 years.

More recently the house has been reduced in size and present accommodation includes three reception rooms and a large central hall with galleried landing and eight principal bedrooms, besides staff quarters. It has been sold with about 50 acres of parkland. Wilson and Co. Wre the agents concerned, through whom, also, Mrs Schuster has bought property in Sidmouth.

(The Times (London, England) Thursday, June 27, 1960)

Advertisement

 **Strutt and Parker**

CANTERBURY-CHELMSFORD-CHESHIRE-EDINBURGH-GRANTHAM-IPSWICH-LEWES-SALISBURY-SOUTHEND

THE COMPTON CHAMBERLAYNE ESTATE,
NEAR SALISBURY, WILTSHIRE
Between Salisbury 8 miles and Shaftesbury 12 miles.

AN OUTSTANDING RESIDENTIAL, SPORTING AND INVESTMENT ESTATE
comprising:—

A 17th Century Dower House, 3 Cottages, Gardens and Paddocks. About 237 Acres of Valuable Water Meadows, about 292 Acres of mainly mature woodland and a First Class Pheasant Shoot. **With vacant possession.**

Together with **Three Productive Arable and Stock Farms**
Mill House, Village Stores, 12 Cottages and Houses, Parish Hall, Cricket Field and about **4,350 yards of Double and 600 yards of Single Bank Trout Fishing in the Nadder.**


Let and Producing £10,489 per annum.

In all about 1,434 Acres.

AUCTION AS A WHOLE ON 25th JUNE, 1974 (unless previously sold)
London Office, Tel. 01-629 7282 and Salisbury Office, 41 Milford Street. Tel. 0722 28741
(Ref. 7AB1039)

(The Times (London, England) Wednesday, April 3, 1974)

Advertisement

 **Strutt and Parker**

CANTERBURY CHELMSFORD · CHESHIRE · EDINBURGH · GRANTHAM · IPSWICH · LEWES · SALISBURY · SOUTHEND

**THE COMPTON CHAMBERLAYNE ESTATE
NR. SALISBURY, WILTSHIRE**

Between Salisbury 8 miles and Shaftesbury 12 miles.

An Outstanding Residential Sporting and Investment Estate

A 17th Century Dower House, 3 Cottages, Gardens and Paddocks. About 237 Acres of valuable Water Meadows, about 292 Acres of mainly mature Woodland. And a first-class Pheasant Shoot. **546 ACRES. WITH VACANT POSSESSION** together with 3 productive arable and stock Farms, Mill House, Village Stores, 12 Cottages and Houses, Parish Hall, Cricket Field and 4,350 yards double and 600 yards single bank Trout Fishing in The Nadder.

Let and producing £10,489 per annum.

IN ALL ABOUT 1,434 ACRES.

Auction as a whole on 25th June, 1974 (unless previously sold).

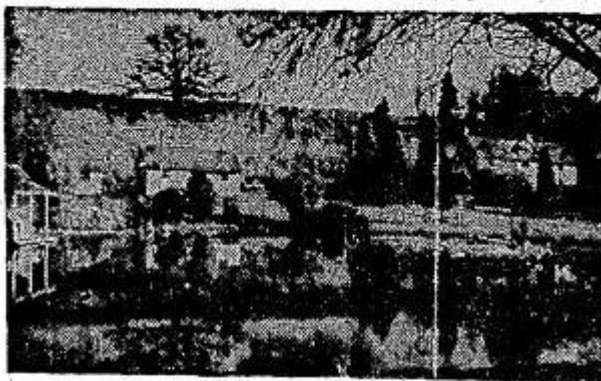
London Office, Tel. 01-629 7282 and Salisbury Office, 41 Milford Street.
Tel. 0722 28741 (Ref. 7AB1039)

(The Times (London, England) Wednesday, May 15, 1974)

Advertisement

**THE COMPTON CHAMBERLAYNE ESTATE,
NEAR SALISBURY, WILTSHIRE**

Between Salisbury 8 miles and Shaftesbury 12 miles.



AN OUTSTANDING RESIDENTIAL SPORTING AND INVESTMENT ESTATE

A 17th Century Dower House, 3 Cottages, Gardens and Paddocks. About 237 Acres of Valuable Water Meadows. About 292 Acres of Mainly mature Woodland and a First Class Pheasant Shoot.

546 ACRES WITH VACANT POSSESSION together with 3 Productive Arable and Stock Farms. Mill House, Village Stores, 12 Cottages and Houses. Parish Hall, Cricket Field and about 4,350 yards Double and 600 yards Single Bank Trout Fishing in the Nadder.

Let and Producing £10,489 per annum.

IN ALL ABOUT 1,434 ACRES.

For Sale by Auction as a Whole on 25th June, 1974 (unless previously sold).

London Office and Salisbury Office. (Ref. 7AB1039)

(The Times (London, England) Wednesday, May 22, 1974)

Huge Estate Sold

Salisbury, England: A unidentified man, represented by a real estate firm, bought the sleepy 14th century village of Compton Chamberlayne in southwest England, and more than 1,400 acres around it, for \$2.05 million at an auction Tuesday. The village was sold as part of a 1,434 acre estate in the Nadder Valley eight miles from Salisbury. The previous owner's will had stipulated the estate be sold as a whole and not broken up into lots.

(The Montreal Gazette - Jun 27, 1974)

Mystery Man Buys Village

Salisbury, England - A mystery man bought the sleepy 14th century village of Compton Chamberlayne in southwest England, and more than 1,400 acres around it, for \$2.05 million at an auction Tuesday.

The buyer, whose name was kept secret, was represented by a London real estate firm. The village was sold as part of a 1,434 acre estate in the Nadder valley eight miles from Salisbury. The buyer got fishing rights in the Nadder River, shooting rights for pheasant, partridge and other wild fowl and a parish church built in 1305.

The Penruddocke family settled on the estate in the 13th century and sold it in 1930 to George Cross, who made a fortune in London hotels during the Edwardian era. He died in 1972 and stipulated in his will that the estate be sold as a whole and not broken up into lots.

Many of Compton Chamberlayne's 200 residents attended the auction in hopes of getting a look at their new squire. But they still do not know who he is.

(Pittsburgh Post-Gazette Jun 27, 1974 & The Leader-Post, Regina Jun 27, 1974)
